



| A KMS Company

# COMPANY PROFILE

Embrace the Digital Enterprise



# KMS STORY



| Proprietary and Confidential

A premier global technology consulting firm that provides innovative software services and digital solutions to empower its clients to achieve more



**2022**

Launched KMS Healthcare to specialize in healthcare services and products and Kaypay - a product of BNPL

**2021**

Launched BankTech Center to accompany the regional banks' Digital Transformation journey

**2019**

Established KMS Solutions to help APAC clients with World-class Digital Solutions

**2016**

Launched Kobiton - an all-in-one mobile test automation platform

**2015**

Launched Katalon - an award-winning test automation tool

**2011**

Launched QASymphony - a leading agile test management platform

**2009**

Established KMS Technology in Atlanta, U.S & Vietnam



## Global Operations

5 Offices across the  
US, Australia & Vietnam



## Solid Footprint in Vietnam

1,600+ Members



## Software Engineering Excellence

130+ Global Clients &  
\$139M savings in development costs



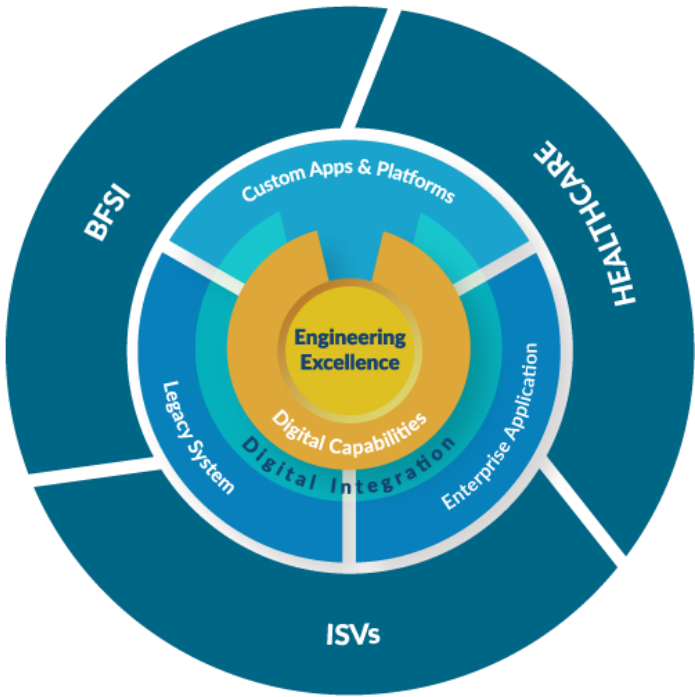
## Strong Quality Focus

3 Software Quality Products &  
Platforms built and launched



# KMS SOLUTIONS OVERVIEW

Designated to bring the world’s innovative technologies to Asia Pacific. It helps organizations achieve their business goals through world-class digital capabilities and fit-for-purpose solutions



  
WORLD-CLASS  
SOLUTIONS

  
DIGITAL  
FOCUS

  
ACCELERATED  
TIME TO VALUE



| Proprietary and Confidential

## PARTNER NETWORK







## STRATEGIC ROADMAP

Implement business strategy  
and roadmap for Digital  
Transformation

## TECHNOLOGY ADOPTION

Adopt the latest  
technologies and enterprise  
solutions

## MODERNIZATION

Modernize functionalities for  
increased responsiveness to  
customer needs

## INTEGRATION

Integrate new capabilities  
into systems and platforms  
for optimal performance

# Help Clients turn Technology into Business Transformation



## DIGITAL APPS & PLATFORMS

- Digital Product Consulting
- Custom Development
- Digital Integration



## DIGITAL TESTING

- Test Automation & DTLC Enablement
- Performance Test
- Security Test



## DIGITAL TEAM

- Agile Engineering Team
- Scalable Digital Hub



## ENTERPRISE APPLICATIONS

- Implementation
- Migration & Integration
- Product Support



## DATA & ANALYTICS

- Data Warehouse
- Analytics Integration
- Data-as-a-service
- Martech Suite

## DOMAIN SOLUTIONS



Modern Banking  
Platform



Digital Lending



KMS Automation Testing  
Framework

# DIGITAL APPS & PLATFORMS OFFERINGS



| Proprietary and Confidential



## CONSULTING

*Help clients accelerate their transformation with industry best practices and leading-edge technologies*

- Quickly respond to market changes and seize new opportunities
- Customer-centric approach to generate value for customers and users
- Lean Business Operations



## CUSTOM DEVELOPMENT

*Build the next-gen foundation for future growth*

- Mobile-First Development
- Migrate and Modernize applications
- Lean Agile Approach
- Scalable Cloud-Native Architecture



## DIGITAL INTEGRATION

*Connect all legacy and new enterprise systems for seamless and frictionless alignment across the business and with customers*

- Uplift customer experience with smooth integration of front and back-office applications
- APIs and Microservices based
- Business Process Integration & Automation

# DIGITAL TESTING OFFERINGS



| Proprietary and Confidential

## PERFORMANCE TESTING

Continuously evaluate and benchmark performance levels for deep insights into the application's reliability

## SECURITY TEST

Uncover vulnerabilities, threats, and risks in a software application to prevent malicious attacks

## DIGITAL TESTING LIFECYCLE

## TEST AUTOMATION & DTLC ENABLEMENT

Maximize test coverage and ensure excellent software quality



FULL COVERAGE  
ACROSS PLATFORMS



CODELESS TEST  
AUTOMATION



PROVEN FRAMEWORKS AND  
METHODOLOGIES

## OUR PLATFORMS OF CHOICE



## CLOUD SERVICES





# DATA & ANALYTICS OFFERINGS



| Proprietary and Confidential



## DATA WAREHOUSE

*Build a unified and scalable data source*

Next-gen technologies that enrich your data for a truly 360-degree view of your business without pain



## SEAMLESS ANALYTICS INTEGRATION

*Integrate BI into all of your applications*

Simple and white-labelled BI integration with robust user access data governance



## DATA-AS-A-SERVICE

*Gain absolute control over your data*

Self-service data access solution to empower your business partners to grow within a controlled scalable data ecosystem



## MARTECH SUITE

*Design hyper-personalized customer experience*

Bring Product Management Analytics, CDP And engagement platform to interact and to give the best user experience. Increase retention, optimize your acquisition and improve your ROI

## BENEFITS

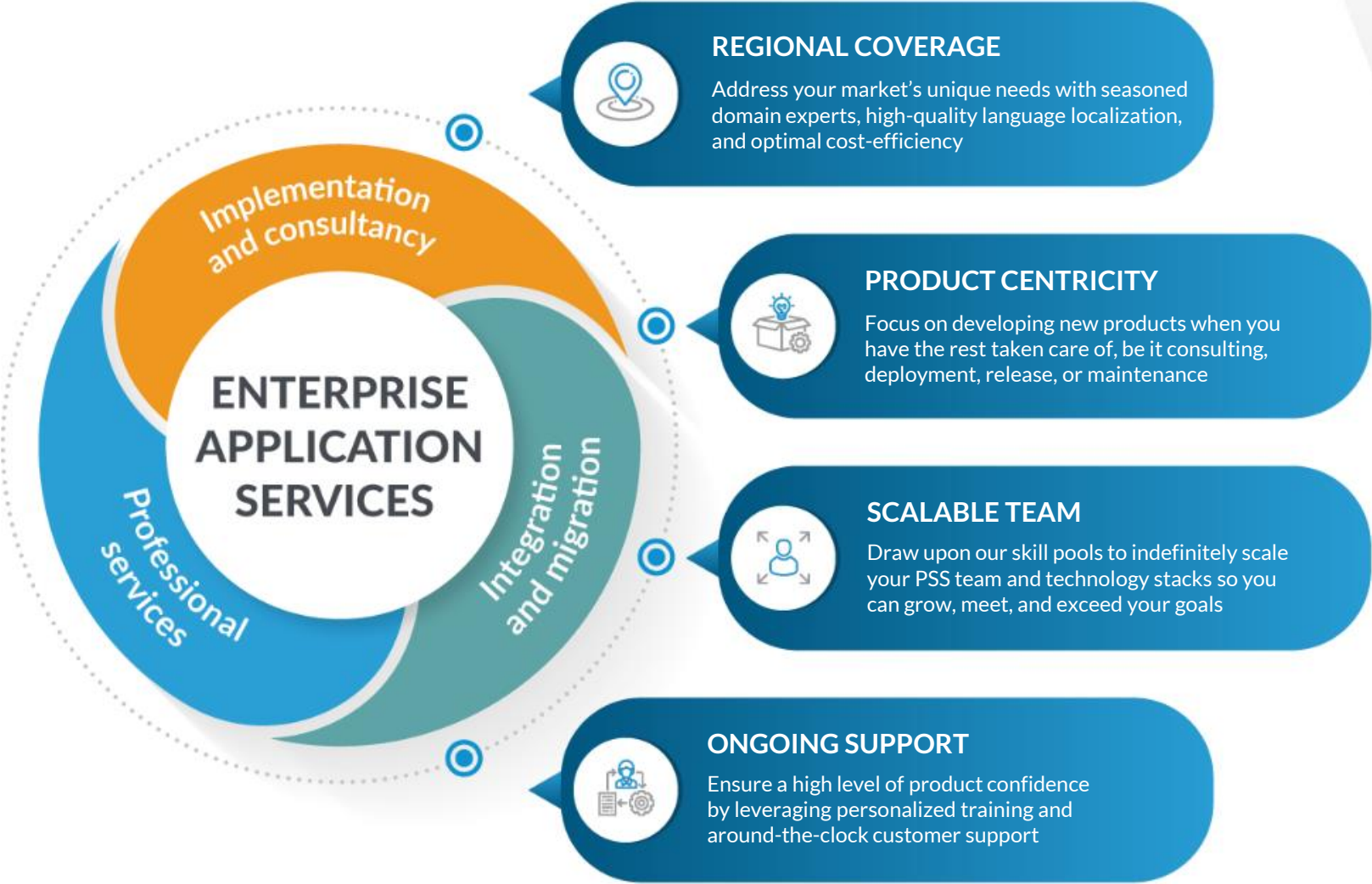
- Ability to fit your business strategy and your data journey at any stage to achieve the best ROI
- Scalable solution for a reduced total cost of ownership
- Fast and Seamless Integration



# ENTERPRISE APPLICATION SERVICES OFFERINGS



| Proprietary and Confidential



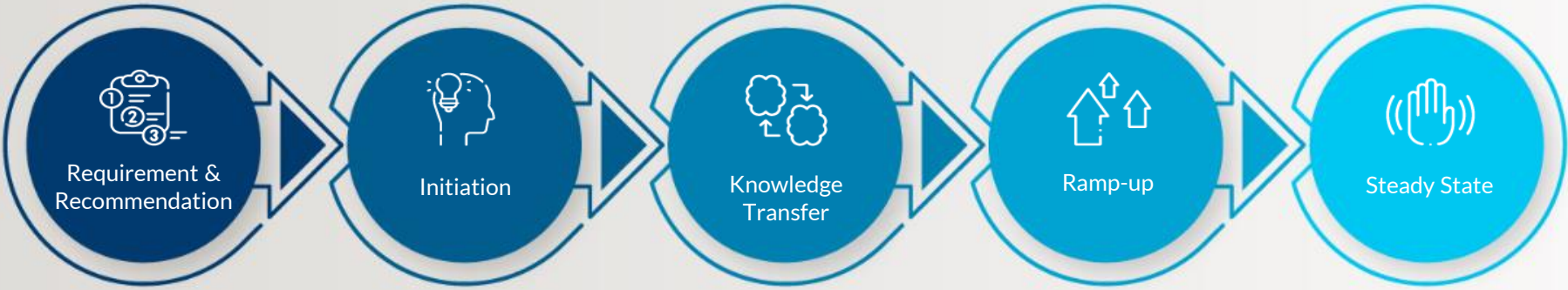
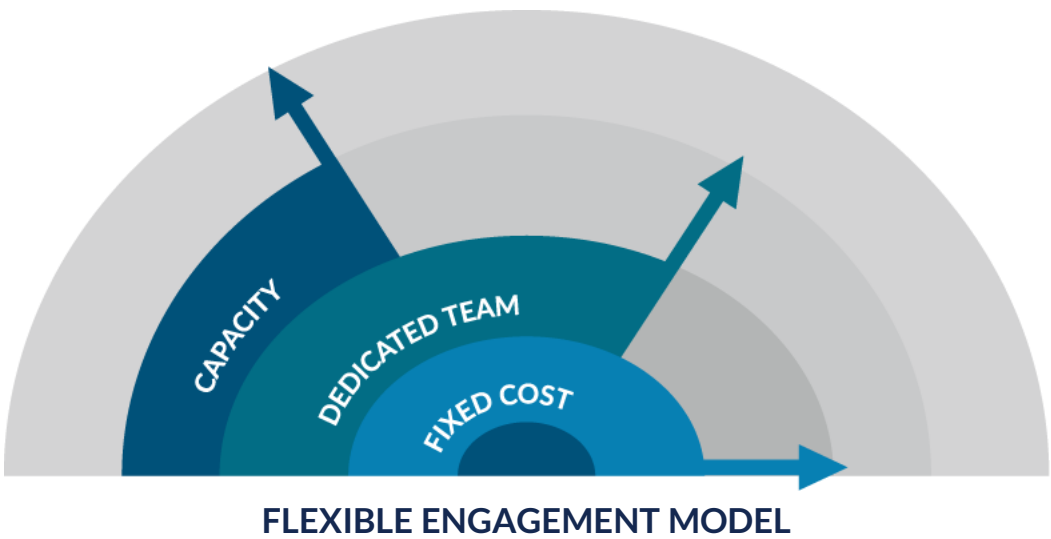
Accelerate your business growth and go-to-market endeavor while promoting product innovation

# DIGITAL TEAM OFFERINGS



| Proprietary and Confidential

Build and Scale Your Agile Engineering Team with Confidence



**PROVEN QUALITY ASSURANCE FRAMEWORK**



## TECH STACKS

### FRONT END

HTML5 / CSS / JS / React / Angular /  
Vue / Ember / Backbone

### MOBILE

React Native, SWIFT, Kotlin, Flutter, iOS  
(Objective-C) & Android (Java)

### BACK END

.NET / Java / NodeJS / RoR / Python / PHP / Go / ExpressJS / ActiveMQ /  
RabbitMQ / Solr / Elasticsearch / SharePoint / Sitecore

### DATABASE

SQL Server / Oracle / MySQL / PostgreSQL / Hadoop / Kafka /  
MongoDB / Cassandra / Redis

### CLOUD SERVICES



## TOOLS

### PROJECT MANAGEMENT

JIRA, Trello, VersionOne, Rally, TFS, Balsamiq, XMind, MockFlow

### DEVELOPMENT

Visual Studio (Code), Eclipse, Android Studio, IntelliJ, Atom, GitHub,  
Bitbucket, GitLab, TFS, Sonar

### TESTING

qTest, TFS, Zephyr, Katalon, Selenium, Appium, Cypress.io, Robot,  
SoapUI, Postman, JMeter, Locust, SmartBear

### DEVOPS

Jenkins, TeamCity Bamboo, Docker, Kubernetes, Ansible, Octopus, Maven,  
TFS, Puppet, Chef

### COLLABORATION & COMMUNICATION







## Digital-first Experience

### Deliver hyper-personalized experience across every banking channel

- **Retail Banking:** Next-gen mobile app for personal customers
- **Business Banking:** All-in-one app for business clients
- **Digital Lending:** Digitize every of your loan products
- **PayConfirm:** A mobile transaction authentication solution



## Product Innovation

### Enablers of a success digital transformation

- **Open Banking:** Seamless integration with 3rd-party & Digital Channels
- **Digital Product Consulting:** Conceptualizing, Designing, Prototyping, Developing & Delivering Process to the new digital experiences



## Operational Efficiency

### Achieve operational efficiency through digitization and automation

- **Digital RM:** Innovative Mobile App for comprehensive Relationship Management
- **Intelligent Automation Banking:** AI, RPA, and Process Orchestrator
- **BankBI:** Digital Dashboard and Analytics Integration
- **BankTest:** Automated Testing for Functional & Performance Validation; Security Test



Enhanced business agility

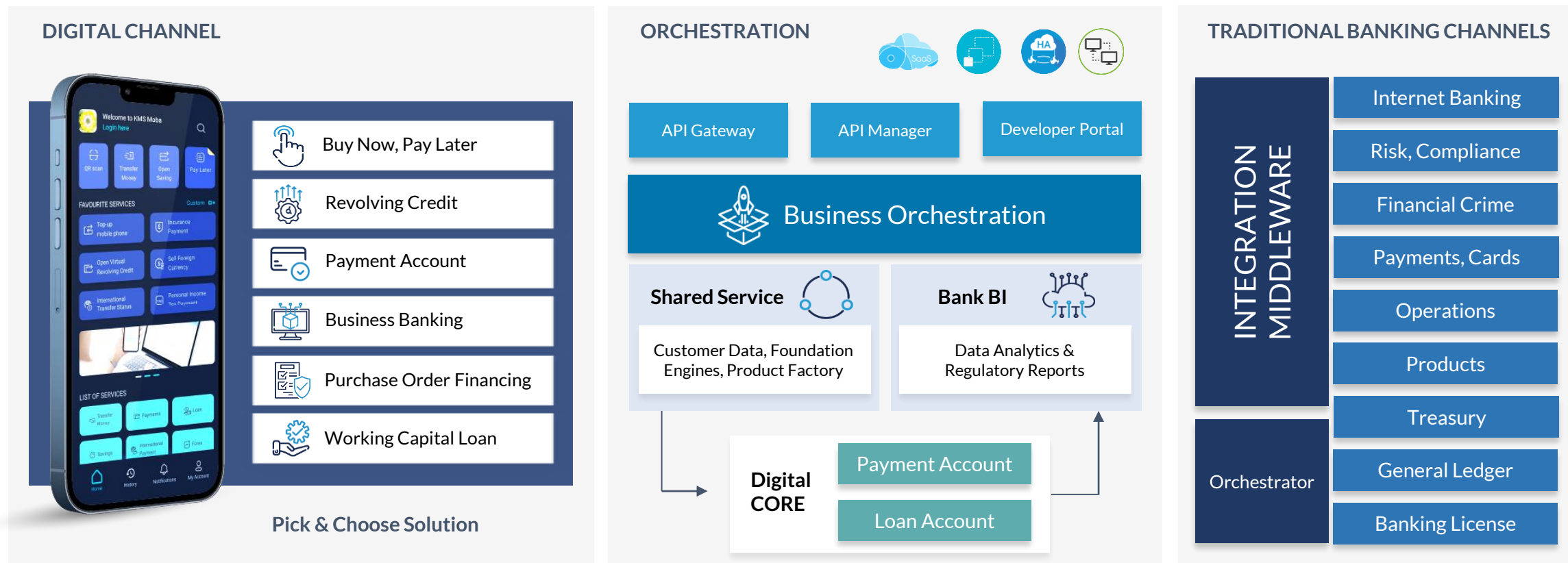


Better digital experience



Higher operational efficiency

# KMS MODERN BANKING PLATFORM | BUILT FOR CHANGES

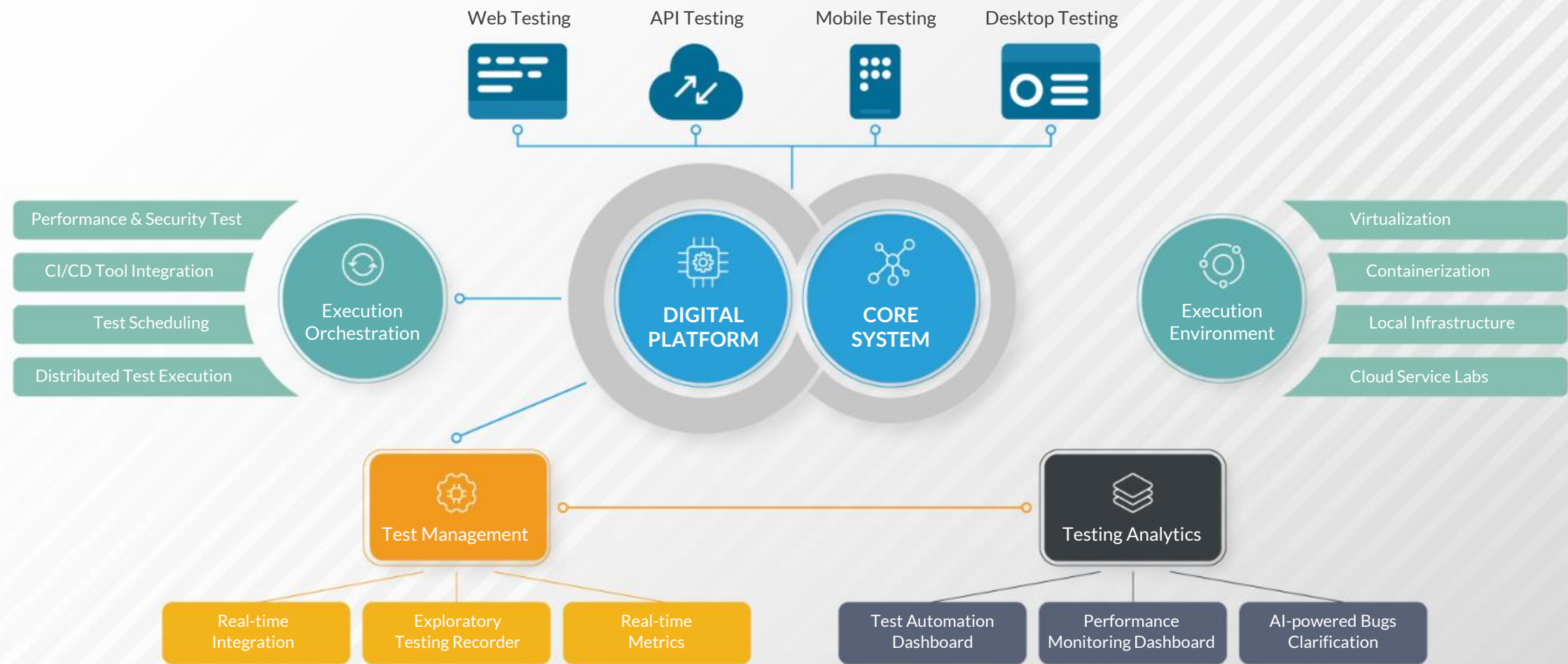


- **PICK & CHOOSE** your solution for financial products such as Business Banking, Payment Account. The solution comes with foundational components and integrate with your existing infrastructure such as General Ledger, Cards
- Easy to **CONFIGURE**, powerful **LOW-CODE TOOL** to design business processes and integration between systems
- Our platform supports **PLATFORM-AS-A-SERVICE (PaaS)** model, dedicated instance, increased security control for Client

# KMS AUTOMATION TESTING FRAMEWORK



| Proprietary and Confidential



Help Banking and Insurance businesses innovate faster with comprehensive Quality Assurance solutions

# THESE BRANDS TRUST KMS



| Proprietary and Confidential







| Proprietary and Confidential



## ATLANTA

1776 Peachtree NW Suite 200N, GA 30309  
(678) 813-1KMS

## SYDNEY

Se 1, L18, 219-227 Elizabeth ST, NSW 2000

## HO CHI MINH

2 Tan Vien Street, Tan Binh District  
(+84) 28 38 11 99 77

## HA NOI

6th floor, Dreamplex, 174 Thai Ha Street, Dong Da District  
(+84) 24 73 00 58 00

## DA NANG

5th Floor, VNPT Building, 346 2/9 Street, Hai Chau District  
(+84) 28 3811 9977



[www.kms-solutions.asia](http://www.kms-solutions.asia)



[contact@kms-solutions.asia](mailto:contact@kms-solutions.asia)