



| A KMS Company

DATA & ANALYTICS SERVICE

Get innovative data solutions



KMS STORY



| Proprietary and Confidential

A premier global technology consulting firm that provides innovative software services and digital solutions to empower its clients to achieve more



2022

Launched KMS Healthcare to specialize in healthcare services and products and Kaypay - a product of BNPL

2021

Launched BankTech Center to accompany the regional banks' Digital Transformation journey

2019

Established KMS Solutions to help APAC clients with World-class Digital Solutions

2016

Launched Kobiton - an all-in-one mobile test automation platform

2015

Launched Katalon - an award-winning test automation tool

2011

Launched QASymphony – a leading agile test management platform

2009

Established KMS Technology in Atlanta, U.S & Vietnam



Global Operations

5 Offices across the
US, Australia & Vietnam



Solid Footprint in Vietnam

1,600+ Member



Software Engineering Excellence

130+ Global Clients &
\$13.8B in cumulative value generated



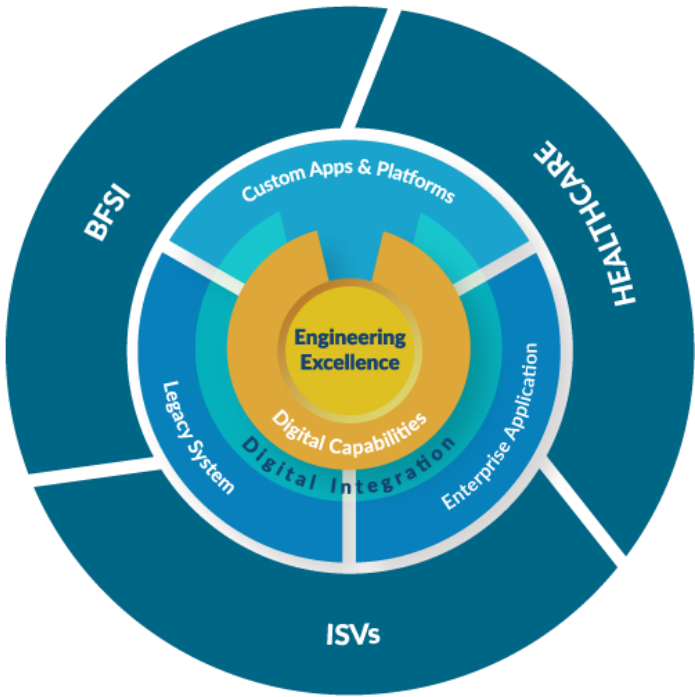
Strong Quality Focus

3 Software Quality Products &
Platforms built and launched



KMS SOLUTIONS OVERVIEW

Designated to bring the world’s innovative technologies to Asia Pacific. It helps organizations achieve their business goals through world-class digital capabilities and fit-for-purpose solutions




WORLD-CLASS
SOLUTIONS


DIGITAL
FOCUS


ACCELERATED
TIME TO VALUE



| Proprietary and Confidential

PARTNER NETWORK



DATA & ANALYTICS OFFERINGS



| Proprietary and Confidential

DATA WAREHOUSE

Build a unified and scalable data source

Next-gen technologies that enrich your data for a truly 360-degree view of your business without pain

SEAMLESS ANALYTICS INTEGRATION

Integrate BI into all of your applications

Simple and white-labelled BI integration with robust user access data governance

DATA-AS-A-SERVICE

Gain absolute control over your data

Self-service data access solution to empower your business partners to grow within a controlled scalable data ecosystem

MARTECH SUITE

Design hyper-personalized customer experience

Bring Product Management Analytics, CDP And engagement platform to interact and to give the best user experience.
Increase retention, optimize your acquisition and improve your ROI

BENEFITS

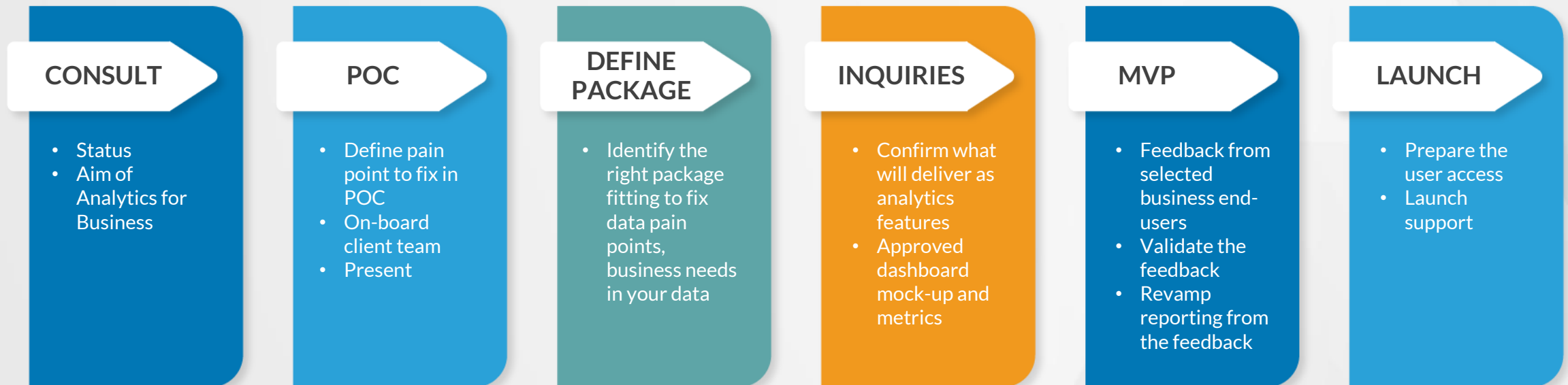
- Ability to fit your business strategy and your data journey at any stage to achieve the best ROI
- Scalable solution for a reduced total cost of ownership
- Fast and Seamless Integration



ROADMAP OF A SUCCESSFUL DATA ANALYTICS

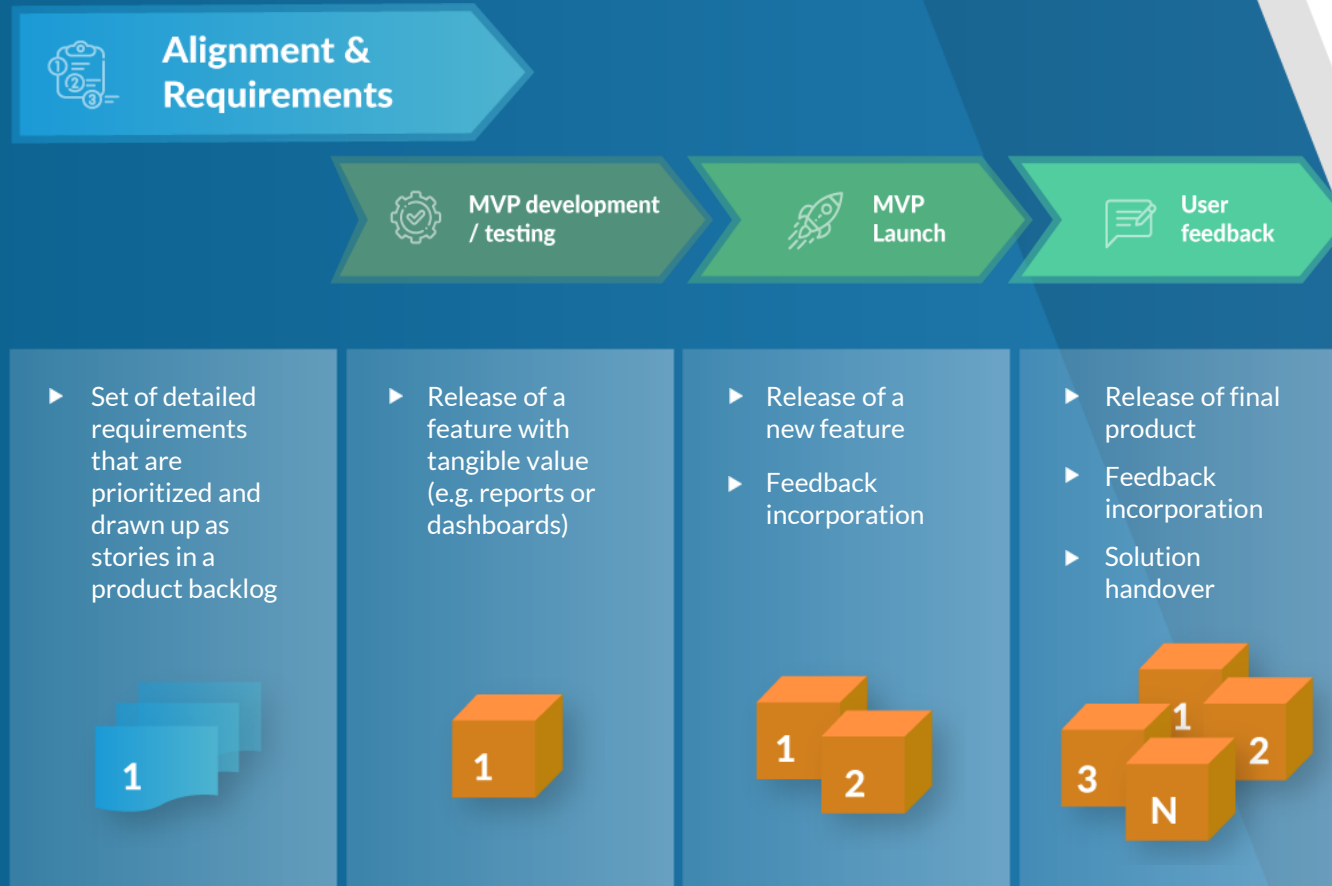


| Proprietary and Confidential

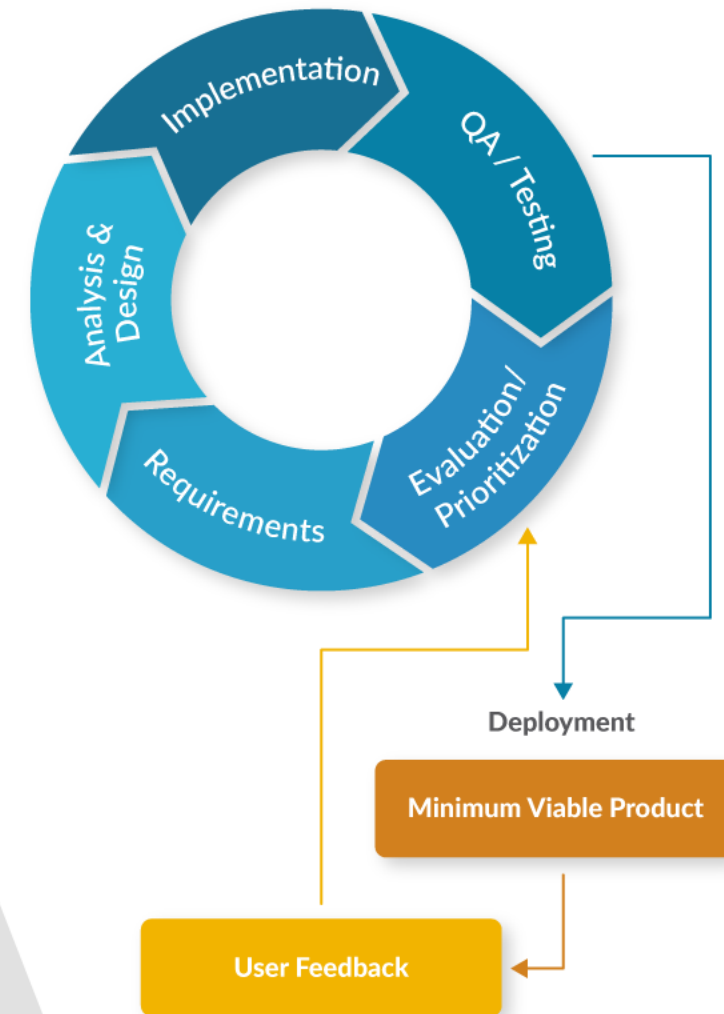


DATA & ANALYTICS PROJECT APPROACH

Agile development to achieve rapid time to value & customer feedback



| Proprietary and Confidential



DATA & ANALYTICS SERVICES OVERVIEW



| Proprietary and Confidential

End-to-end ownership of service delivery from Consulting, Implementation, Migration, Architecture scalability and provisioning to complete platform support.

| | | | | |
|---|--|---|---|---|
| Data Processing, Management <ul style="list-style-type: none">Scalable data warehouseETL ArchitectureData pipeline orchestration | Provisioning & Automation <ul style="list-style-type: none">Automation of data pipelineAutomation of user data access management | Data Quality <ul style="list-style-type: none">Metrics calculation consistencySemantic consistencyAggregated data validation | Training & Support <ul style="list-style-type: none">Technical team trainingBusiness end users training on BI toolUser and technical guide.Post implementation services | Security <ul style="list-style-type: none">Fit regulatory Compliance of your company or country regulation |
|---|--|---|---|---|

Data Processing, Management

- Business of model Analysis
- Data gap analysis
- Audit of the data journey
- Data strategy roadmap

Architecture

- Design data architecture of DWH
- Data flow solutions to support your business growth

Development

- ETL development
- DataMart to extract business insight
- Data visualization for insightful data story
- POC, Demo to your business end users



Migrating

- Migration from on-prem legacy platform to cloud scalable data solutions.
- Technology migration (database, BI) to tackle technical and cost challenges

Analytics Customizing

- Customizing analytics solutions to you business model
- Data visualization to fit you branding
- Data monetization to support client/partner business

Optimizing

- Data and insight fast readiness
- Optimizing data architecture
- Optimizing data orchestration
- Optimizing transformation

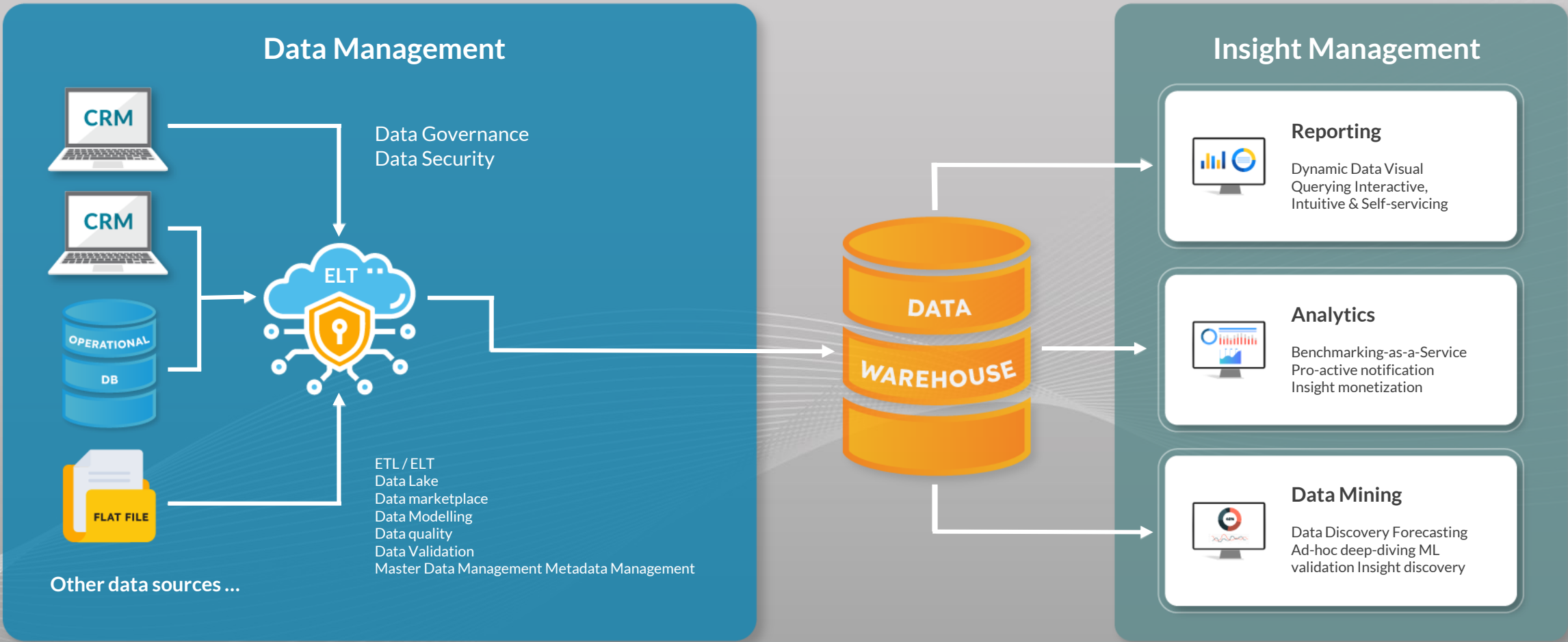
Service as a package or as individual service
All services offerings are Technology agnost

DATA & ANALYTICS COVERAGE



| Proprietary and Confidential

Our experts assess your needs for descriptive, diagnostic, predictive, or prescriptive analytics, and deliver them through cost effective architectures built around flexible technology.



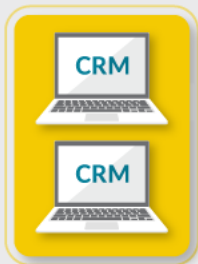
CUSTOMER INSIGHT PLATFORM



| Proprietary and Confidential

Customer 360 degree – get a holistic view of your customers including behavioral and cognitive insights for powerful top funnel engagement

Operational Data



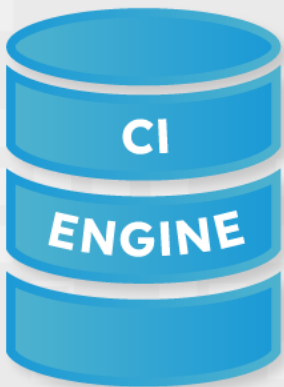
User behavioral Data



Marketing and Enriched Data

Micro Segmentation and Targeting

Cluster and leverage look-alike modeling for segment enrichment and expansion utilizing 2nd party and 3rdparty data



ML

Dynamic segmented top funnel messaging system

Analytics

Benchmarking-as-a-Service
Pro-active notification
Insight monetization

Data Mining

Data Discovery Forecasting Ad-hoc deep-diving ML validation Insight discovery

Insight as service

Share your insight as service to your partner or premium customers without compromising your governance



DATA TECH STACKS

DATABASE

Vertica / PostgreSQL / Redshift / MSSQL / Snowflake
/ KAFKA / MySQL / NETEZZA / Oracle

DATA LAKE

Dremio / S3 / Azure Blob Storage

DATA SCRIPTING

SQL / PL SQL / Python / Ruby / Java

CLOUD SERVICES



TOOLS

DATA VISUALIZATION

PowerBI / Tableau / GoodData.UI / looker / Pentaho / Data Studio

ETL / ELT

GoodData / Pentaho / Airflow

DESIGN & MOCKUP

NiFI / WireFrame

DEVOPS

Jenkins, TeamCity Bamboo, Docker, Kubernetes, Ansible, Octopus, Maven,
TFS, Puppet, Chef

COLLABORATION & COMMUNICATION



HIGHLY SKILLED DATA EXPERT TO YOUR DATA PROJECT



| Proprietary and Confidential



Data Architect

- Design data architecture
- Audit to optimize the data flow
- Review solution before delivery
- Data governance design



Data Engineer

- ETL/ELT execution
- Data migration execution
- Data Quality testing



Data Solutions Engineer

- Data process orchestration
- Customize data processing
- Implement Database , BI tool
- Data governance design
- Point of contact with IT



Data Business Analyst

- Build data mart
- Mock up dashboard
- Create data visualization
- Consult on data story
- Bridge Business to Technology



Data Product owner

- Ensure the delivery Timeline
- Gather requirements & approval
- Manage the resource for tasks
- Build client relationship

Highly skilled engineers, data scientists, analysts supporting you to deliver on key KPI's and make real-time decisions.

DATA OFFERINGS | SERVICE PACKAGES



| Proprietary and Confidential



Analytics Packages

Fitted Package to support to answer business questions with analytics in innovative friendly way

Full Implementation Packages

Build end-to-end analytics solution to solve business questions or to support a new data oriented business model

Data Management Packages

Improve the data quality and to ensure an optimized data pipeline as outcome

Data PSS Packages

Have your scalable PSS team to support your GTM for business growth by servicing your client in emerging new markets

Project Packages

Scalable to team offering along your project life cycle

Migration Service Packages

Modernization of data solutions towards high scalability and agile platform



VISUALIZATION SERVICE PACKAGE

160 hours – 2 Months

- Mockup Visualization with your SMEs
- Build reports
- Build Dashboard
- Support for Ad-hoc reporting



STANDARD PACKAGE

300 hours – 3 Months

- Analytics Solution Design
- Mockup Visualization with your SMEs
- Create Data Marts
- Create Logical data model
- Create Metrics
- Build reports
- Build Dashboard
- Consultancy Data access Governance



PREMIUM ANALYTICS PACKAGE

Customizable hours – 4 Months

- Analytics Solution Design
- Mockup Visualization with your SMEs
- Create Data Marts
- Create logical data model
- Create Metrics
- Build reports
- Build Dashboard
- Consultancy Data access Governance

Add-ons

- BI app embedding
- Training (Business users – technical users)
- Large amount of dashboards

FULL IMPLEMENTATION PACKAGES



| Proprietary and Confidential



STANDARD PACKAGE

700 hours – 6 Months

- Analytics Solution Design
- Mockup Visualization with your SMEs
- Design and execute ELT
- Create Data Marts
- Create Metrics / Dashboard
- Consultancy Data access Governance



PREMIUM IMPLEMENTATION PACKAGE

Customize hours – 7 Months

- Analytics Solution Design
- Mockup Visualization with your SMEs
- Design and execute ELT
- Create Data Marts
- Create Metrics / Dashboard
- Consultancy Data access Governance

Add-ons

- BI app embedding
- Training (Business users – technical users)
- Large amount of data source and dashboard



CUSTOMIZATION PACKAGE

Customizable hours – 1 Year

- Update data pipeline
- Update Data Marts
- Update / Add Metrics, Dashboard
- Ad-hoc Analytics request
- Consultancy Data access Governance
- Support Embedding BI (no implementation)
- Audit & optimization of data pipeline

DATA MANAGEMENT PACKAGES



DATA MANAGEMENT PACKAGE

- Analytics Solution Design
- Data Extraction
- Data Lake provisioning
- Data Cleansing
- Master data
- Design and execute ELT
- Data Warehouse
- Consultancy Data access Governance

Customizable hours
4 Months



DATA SERVICES PACKAGE

- Update data pipeline
- Add new data sources
- Alter Data warehouse
- Audit and optimize the data pipeline
- Consultancy Data access Governance

Customizable hours
1 Year



DATA PSS **PACKAGES**



YOUR PRODUCT YOUR FOCUS

- Focus on your product development
- Focus on your customer needs
- Sales & marketing focus on expansion



WE ARE PROVIDING

- Scalable data team
- Integrate your data solutions to your client
- Manage project on your behalf
- Support your client on your data solution
- Global Geo support
- GTM leads conversion support



PROJECT PACKAGES



| Proprietary and Confidential

KMS is recognized as leading Tech firm in Vietnam, we attract, develop and engage **top talents** to serve the global market.

YOUR DATA PROJECT

- You have the solutions & requirement
- In-house project management & consulting
- Gap of data execution expertise
- Gap of data architecture & orchestration
- Extra Data Talent in your project team for success

BUILD YOUR SPECIAL DATA TASK FORCE

- Provide data expert to your project
- Fitting the data knowledge gap into your data project
- Specialized in ELT and Data Migration.
- Pricing based on headcount against KMS Solutions rate card offer

WE HAVE DATA EXPERTS

- Technology agnostic skilled talent
- Data Architect
- Data engineer (ETL)
- Data engineer (data migration)
- Data analyst
- Data UI/UX specialist
- Data Product manager

MIGRATION PACKAGES



| Proprietary and Confidential



CONSULT

- Audit of data eco-system
- Cloud readiness assessment



PLAN

- Develop a strategy, data road map
- Migration Plan



EXECUTE

- Deploy framework
- Migrate data
- Migrate App data process
- Test and Document



RUN & OPTIMIZE

- Continuous improvement
- Continuous scale-up control
- Optimization for cost control

Legacy non scalable solutions to cloud solution
Technology migration cloud to cloud
Data architecture migration



| Proprietary and Confidential

CASE STUDY



Fraud Platform + Benchmarking

Goals:

- ▶ Enable MasterCard partner banks with a comprehensive fraud platform with detailed, custom benchmarking

Solution:

- ▶ A highly scalable data platform where it can ingest huge amount of data and where insight and benchmark can be shared to external partner without compromising data security and confidentiality

Use Cases:

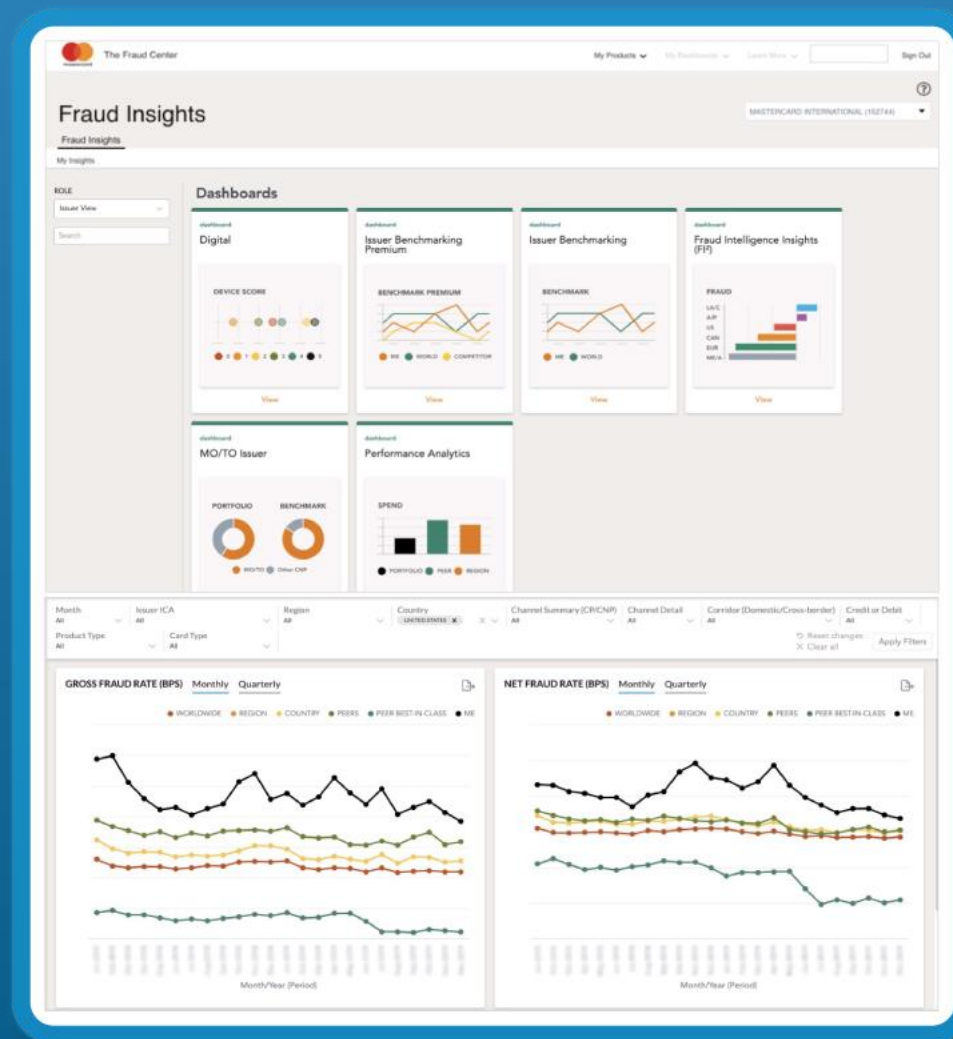
- ▶ **Benchmarking:** Generate benchmark data in real-time based on user profile and interaction from global to small peer groups
- ▶ **Fraud & Risk:** Enable Acquirers, Issuers and Merchants to identify sources of fraud and trends to take preventative action
- ▶ **Banks & Merchants Experience:** Seamless integration between existing portal and entire suite of fraud products

10M
Merchants

2,500+
Acquiring
& Issuing Banks

74B
Transactions/Year

17+
Data Products



FINANCE CASE STUDY



| Proprietary and Confidential

Goals:

- ▶ Consolidate scattered sales data so the wholesale customers have a single pane of glass of the fund info
- Identify investment models used within brokerage firm in order to inform wholesale investors on sales strategy

Solution:

- ▶ Analytics platform can suggest self-service and confidential benchmarking

Use Cases:

- ▶ **Improved product adoption:** The value-add insights helped increase product adoption
- ▶ **Improved customer retention:** With better visualization and context-rich insights
- ▶ **Increased revenue:** New products empowered with selected data solutions

23K
Funds

30B
Positions

60M
Investors

25B
Records



E-COMMERCE CASE STUDY



| Proprietary and Confidential



Challenge:

- ▶ Enable 2,500+ brand partners to better understand their customer's journey to achieve significant growth

Solution:

- ▶ Selected end-to-end solutions as the analytics partner to scale customer insights to thousands of brands

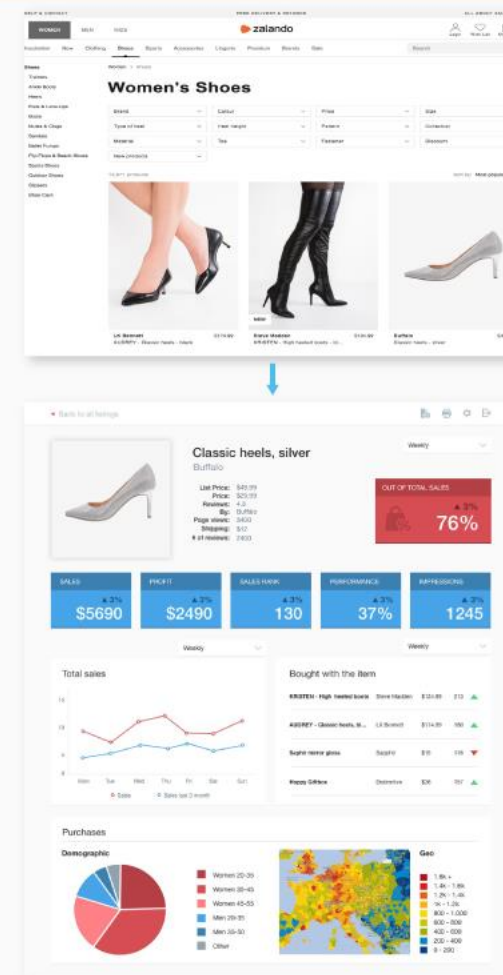
Use Cases:

- ▶ **Improve Sales with Deeper Customer Insights:** Capture clickstream data across the platform to understand how to drive more sales
- ▶ **Better Targeting:** Provide brand partners with key customer demographic and purchase history to better target customers
- ▶ **Benchmarking:** Enable each brand to compare itself to its peers to identify areas for improvement

160M
Customers

~10K
User

2,500+
Brand Partners



CUSTOMER SERVICE CASE STUDY



| Proprietary and Confidential

Challenge:

- ▶ Develop best-in-class analytics offerings to drive growth of mid-market & enterprise customers

Solution:

- ▶ An end-to-end solution that handle data and offer customizable self-service solutions & easy to scale

Use Cases:

- ▶ **Customer Visibility:** Provide insights on which customers are satisfied with your products and which need more support
- ▶ **Planning:** Enable support managers to measure team performance and monitor their workload capacity
- ▶ **Customization:** Empower end customers to tailor their analytics experience to answer questions specific to their business

688k

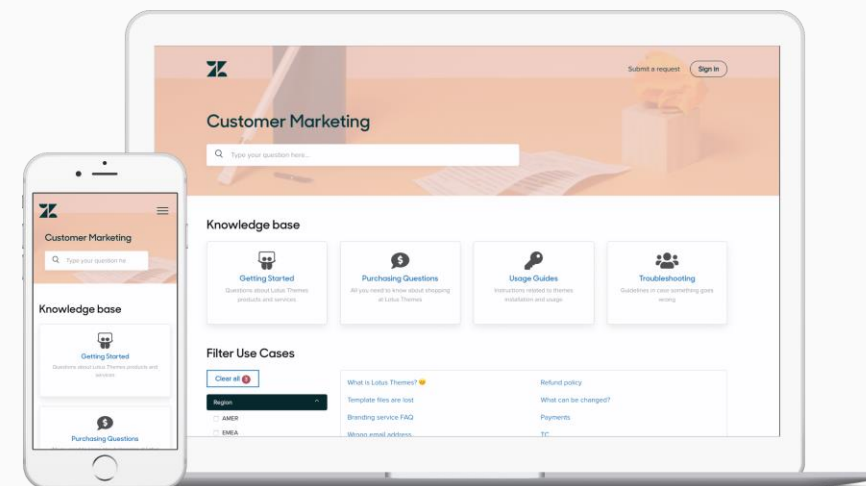
Analytics Users

28k

Customers

320

New Customers/Week



THESE BRANDS TRUST KMS



| Proprietary and Confidential





| Proprietary and Confidential



ATLANTA

1776 Peachtree NW Suite 200N, GA 30309
(678) 813-1KMS

SYDNEY

Se 1, L18, 219-227 Elizabeth ST, NSW 2000

HO CHI MINH

2 Tan Vien Street, Tan Binh District
(+84) 28 38 11 99 77

HA NOI

6th floor, Dreamplex, 174 Thai Ha Street, Dong Da District
(+84) 24 73 00 58 00

DA NANG

5th Floor, VNPT Building, 346 2/9 Street, Hai Chau District
(+84) 28 3811 9977



www.kms-solutions.asia



contact@kms-solutions.asia